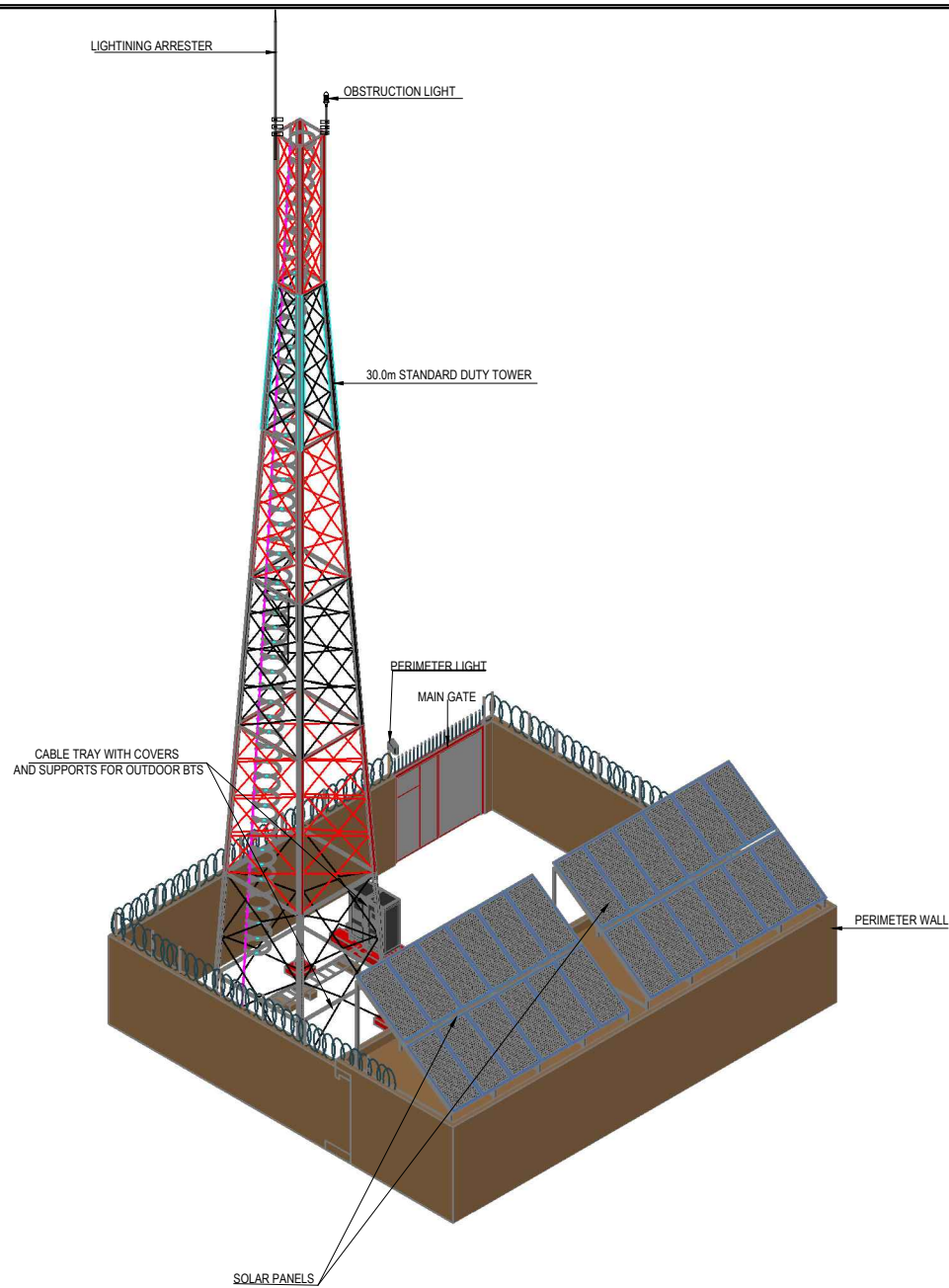


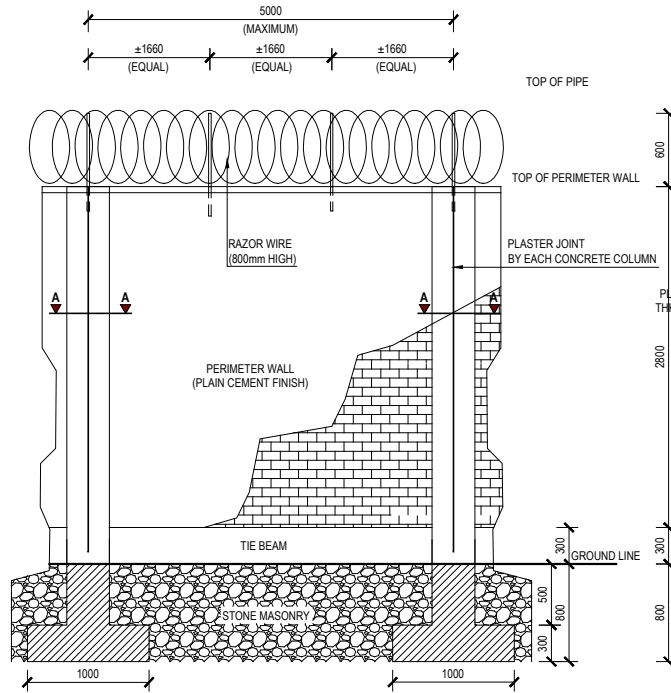
---

**STANDARD DRAWING**  
**DETAILED DESIGN DRAWING**

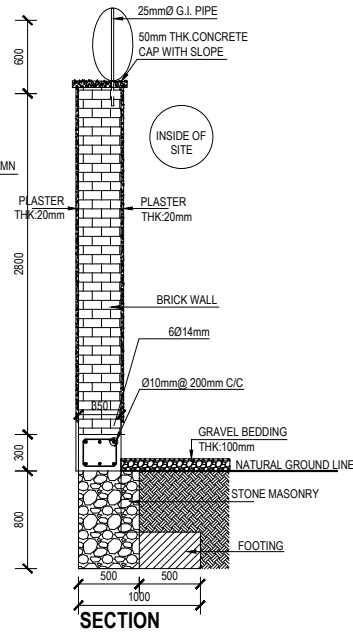
---



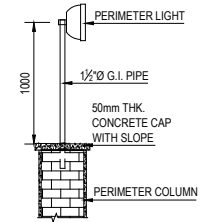
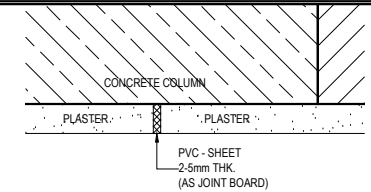
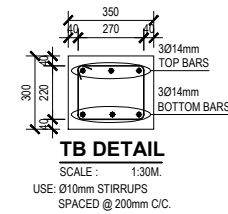
**PERSPECTIVE**  
SCALE : NTS



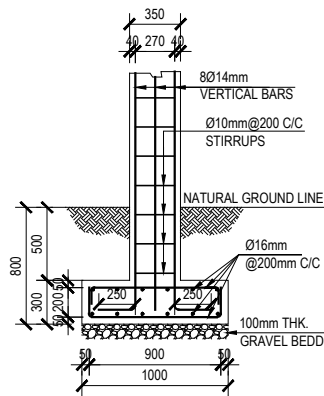
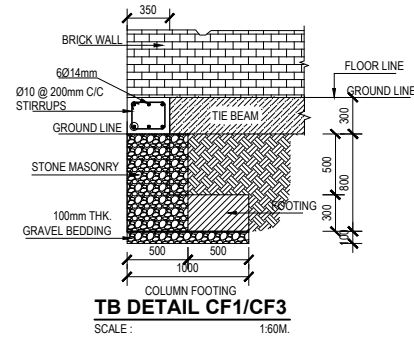
**ELEVATION**  
**PERIMETER WALL DETAIL**  
SCALE : 1:60M.



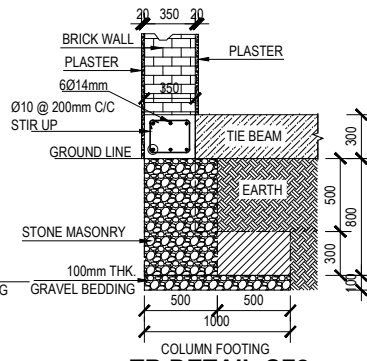
**SECTION**



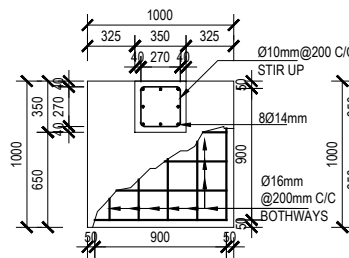
**PERIMETER LIGHT**  
SCALE : 1:60M.



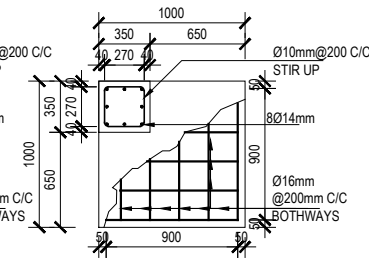
**TYPICAL ELEVATION**  
SCALE : 1:60M.



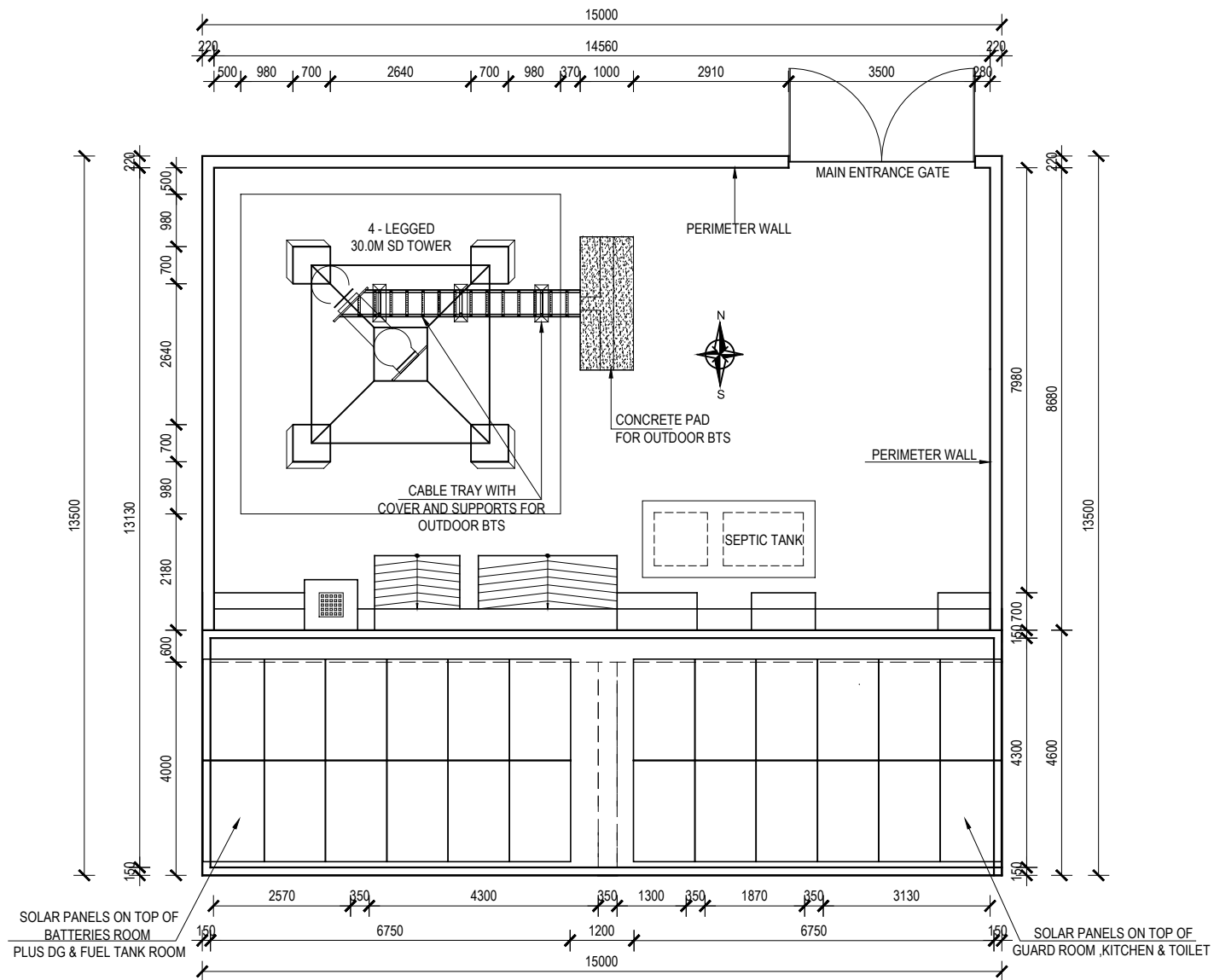
**TB DETAIL CF2**  
SCALE : 1:60M.



**CF1 PLAN**  
SCALE : 1:60M.

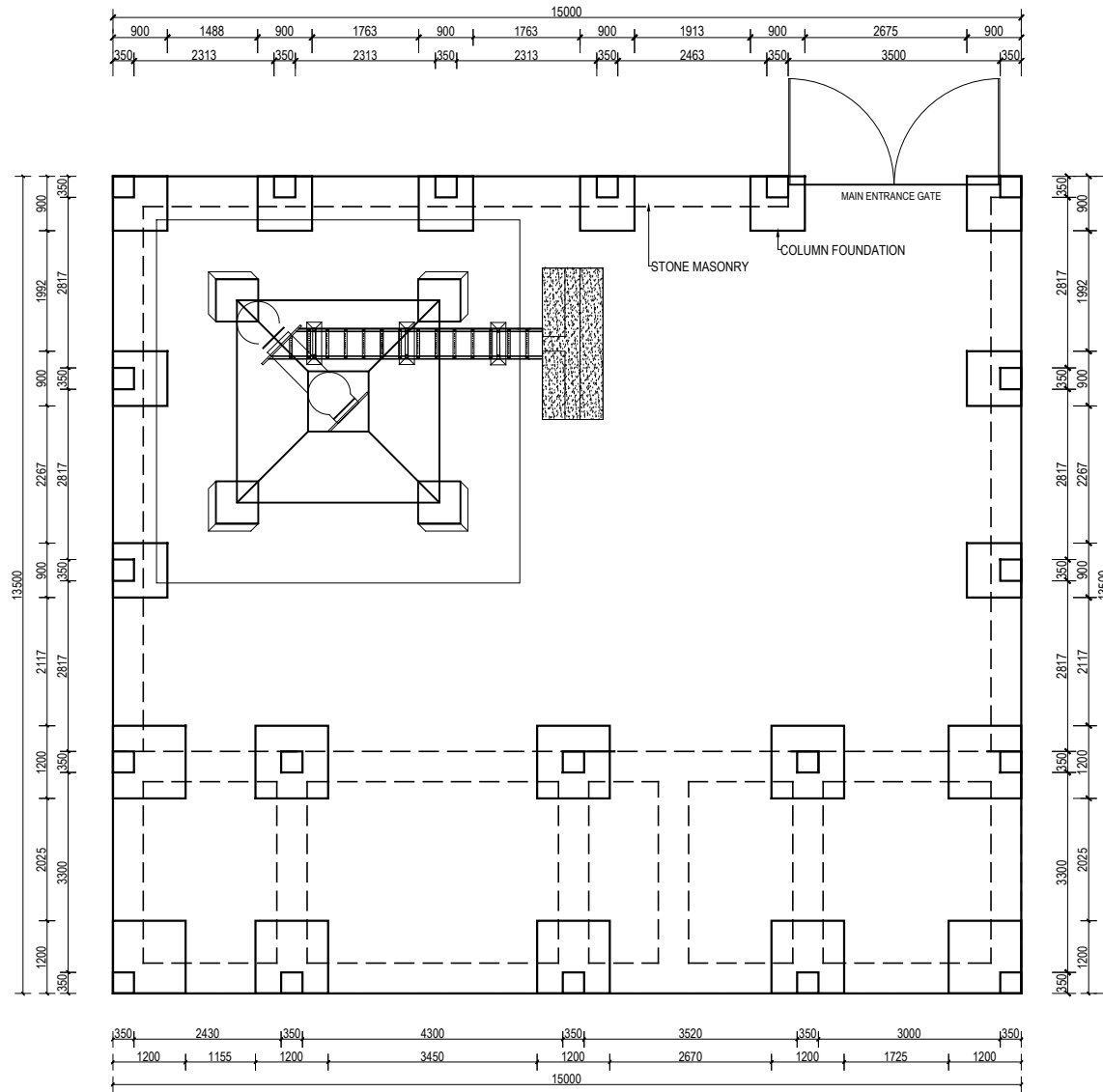


**CF2 PLAN**  
SCALE : 1:60M.



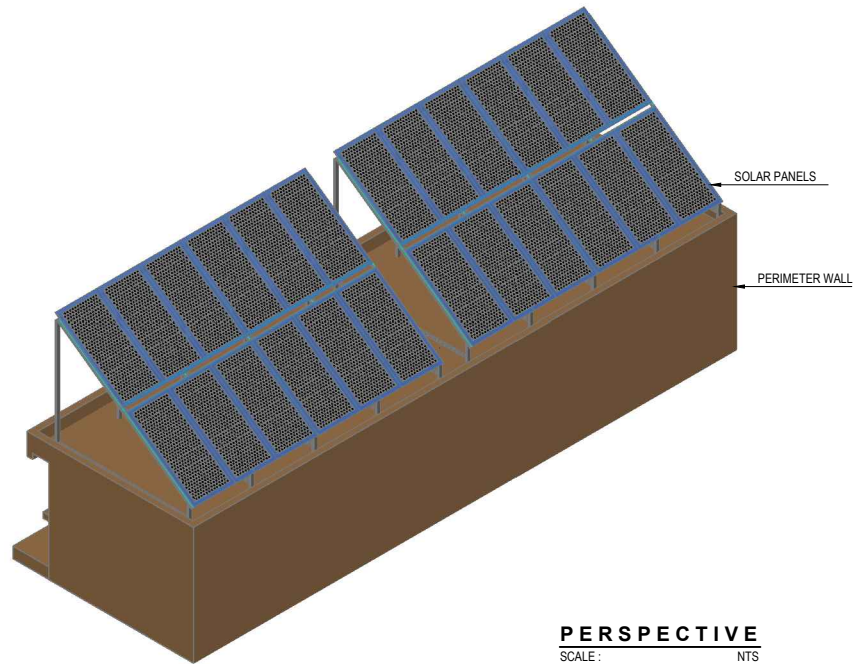
# **SITE PLAN**

SCALE : 1:150M.

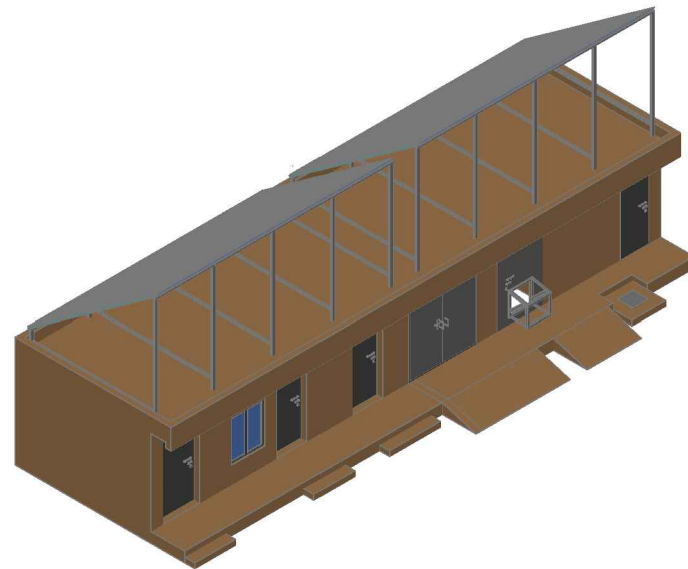


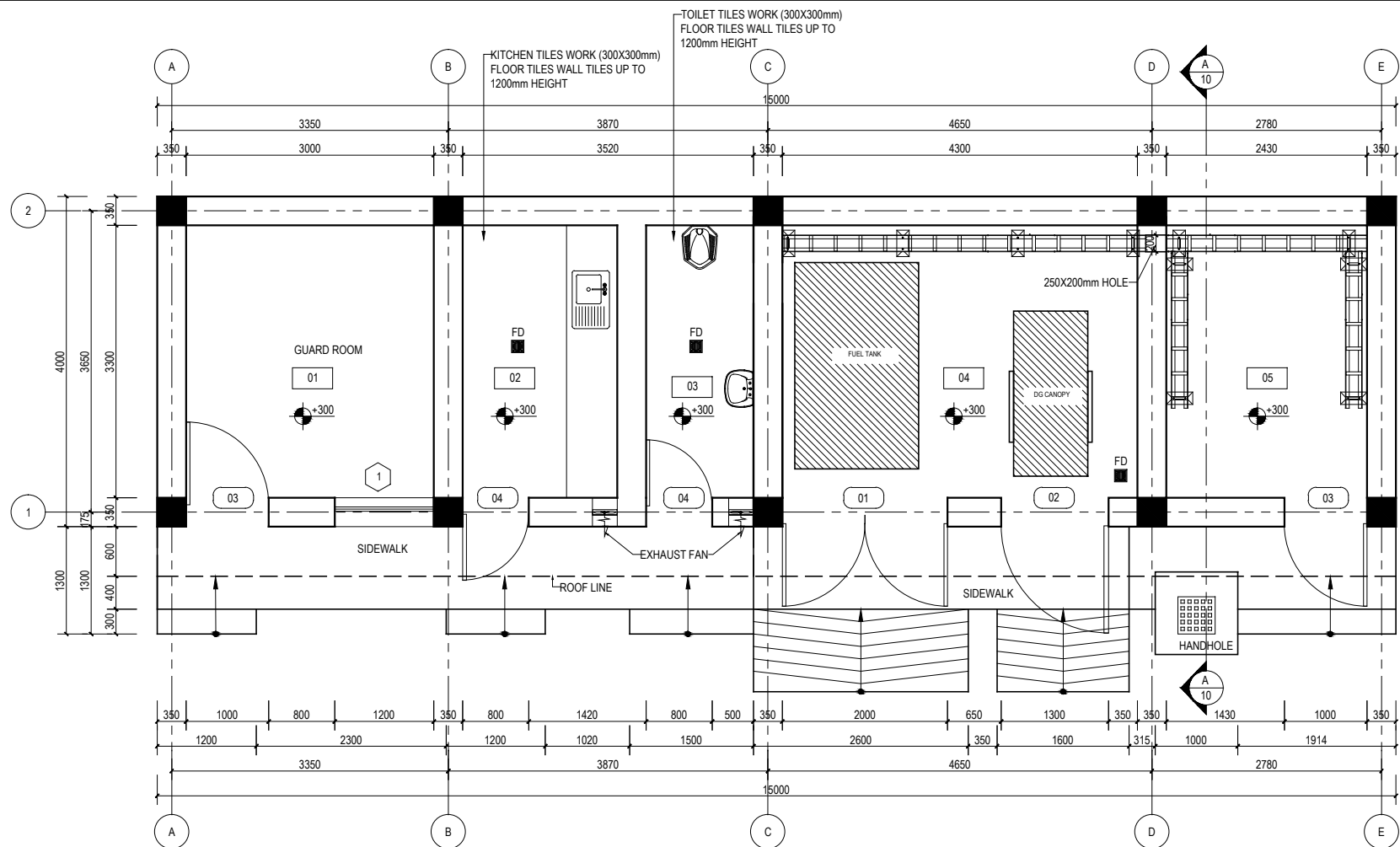
**FOUNDATION PLAN**

SCALE : 1:125



**PERSPECTIVE**  
SCALE: NTS





## FLOOR PLAN

SCALE: 1:80

### NOTE

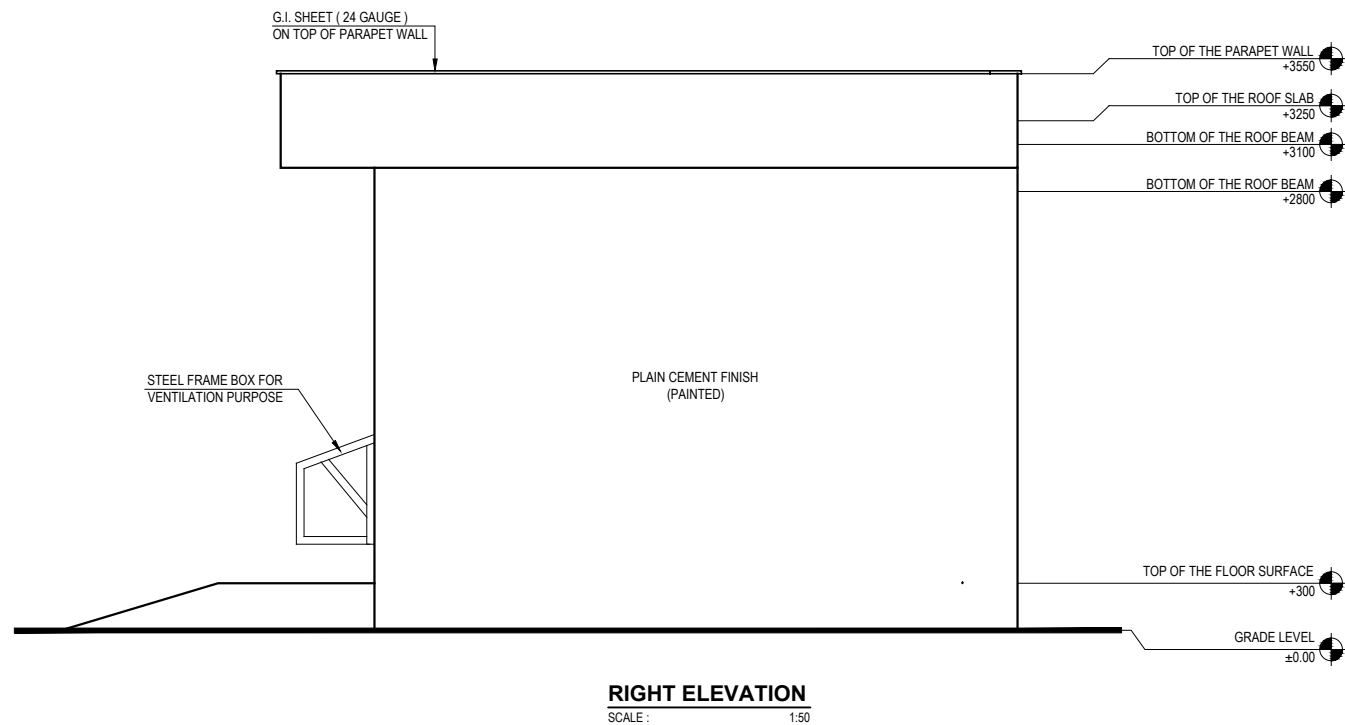
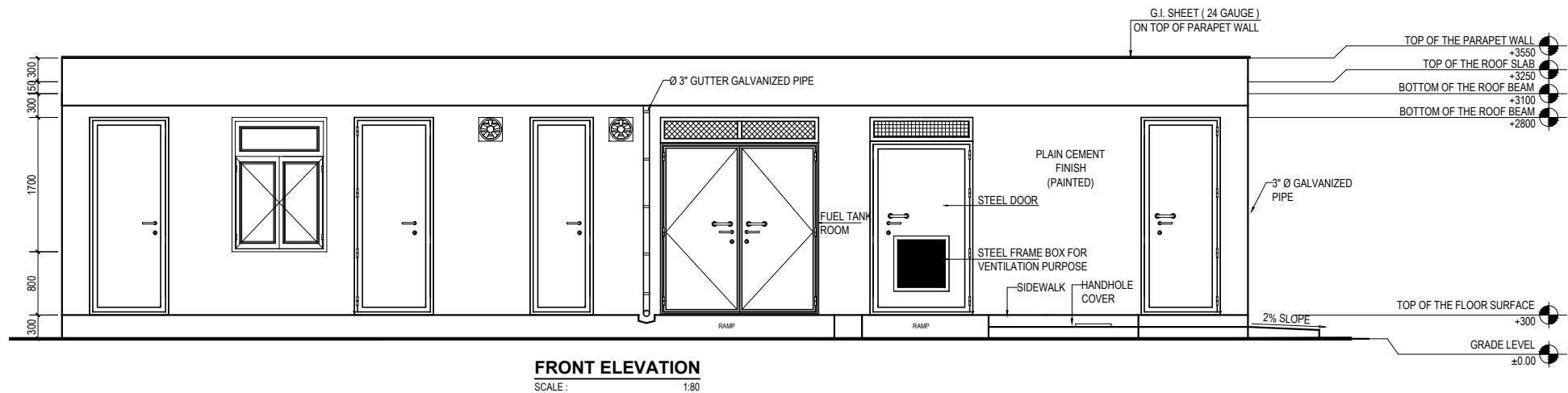
1. ALL DIMENSIONS ARE IN MM AND ANGLES IN DEGREES UNLESS OTHERWISE NOTED.

### HATCH LEGEND

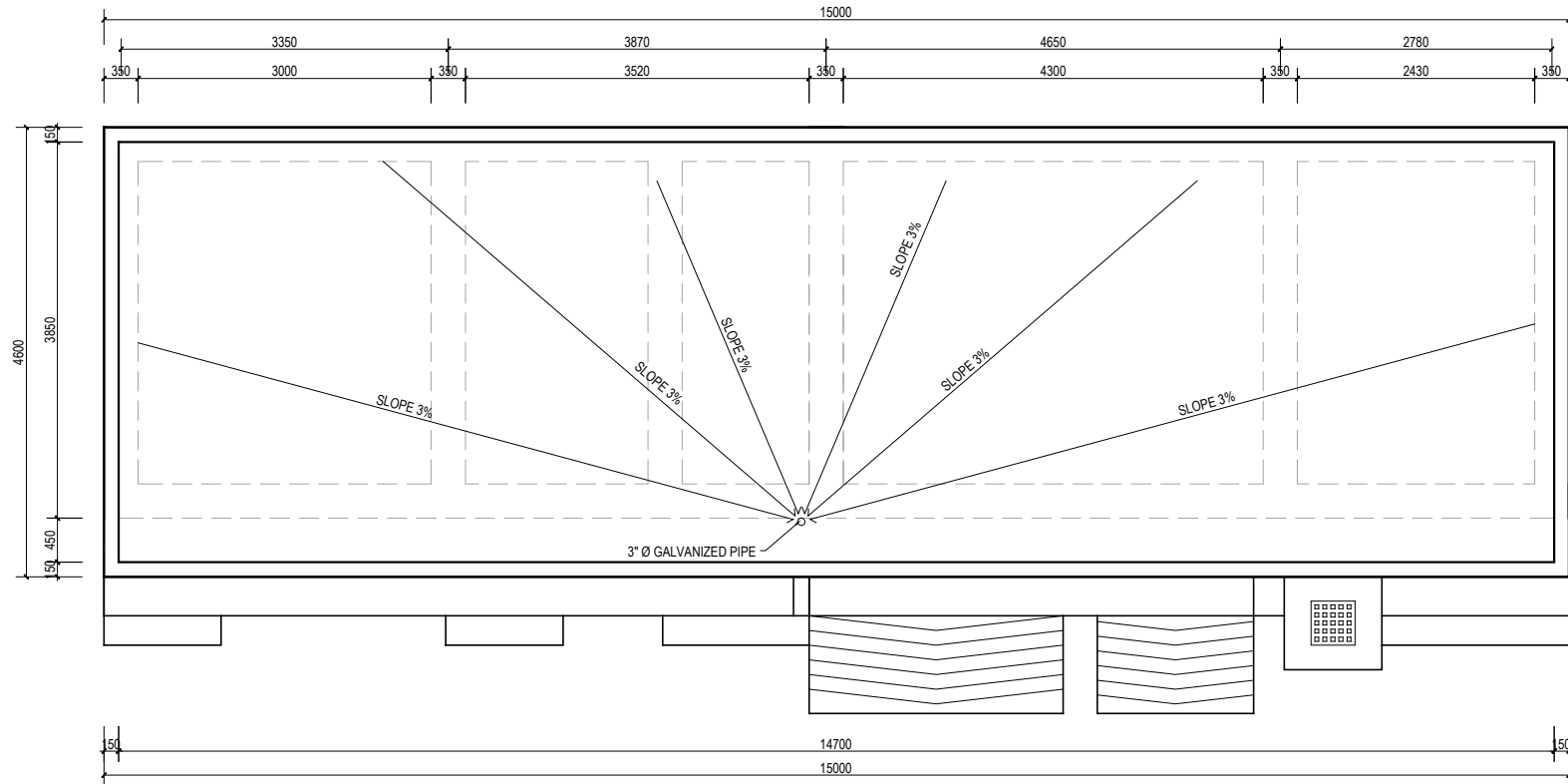
	PLAIN CONCRETE CEMENT
	BRICK WORK
	OVERHEAD STRUCTURE
	REINFORCEMENT COLUMN
DW	DOWN
FD	FLOOR DRAIN
	ELEVATION

### ROOM LEGEND

01	GUARD ROOM
02	KITCHEN
03	TOILET
04	FUEL TANK AND DG ROOM
05	BATTERIES ROOM

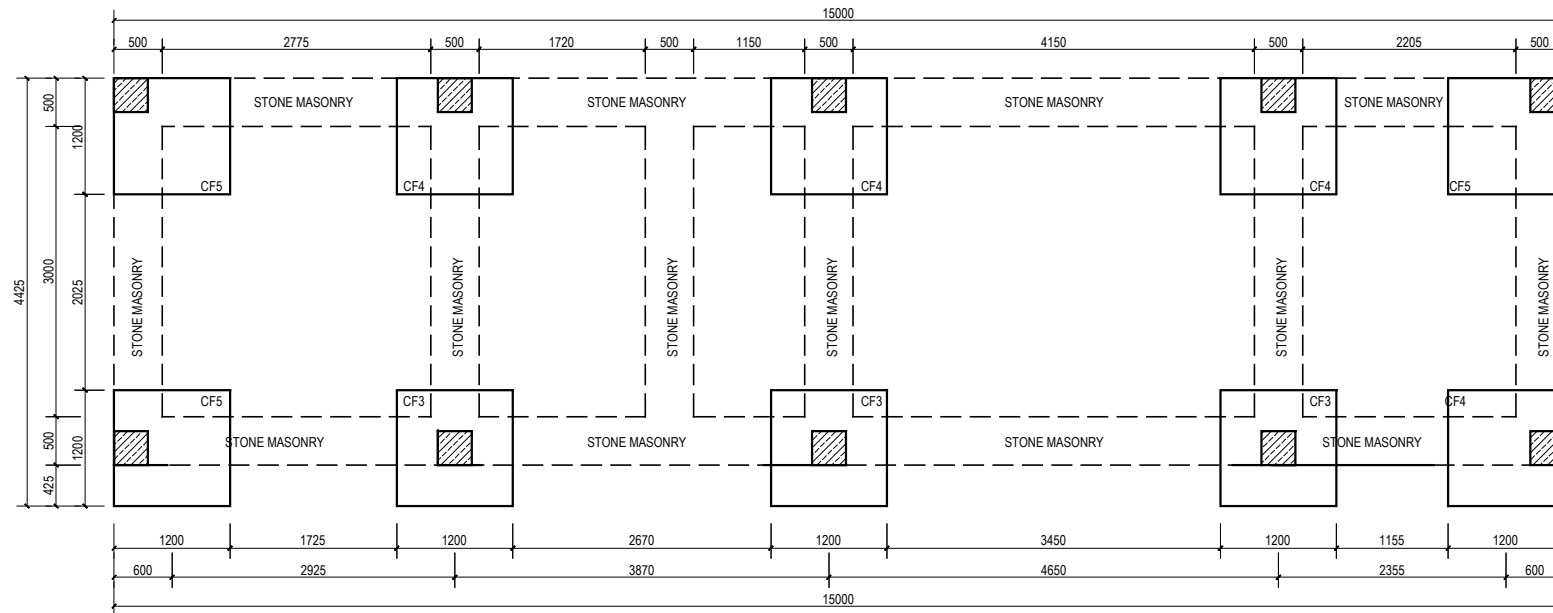






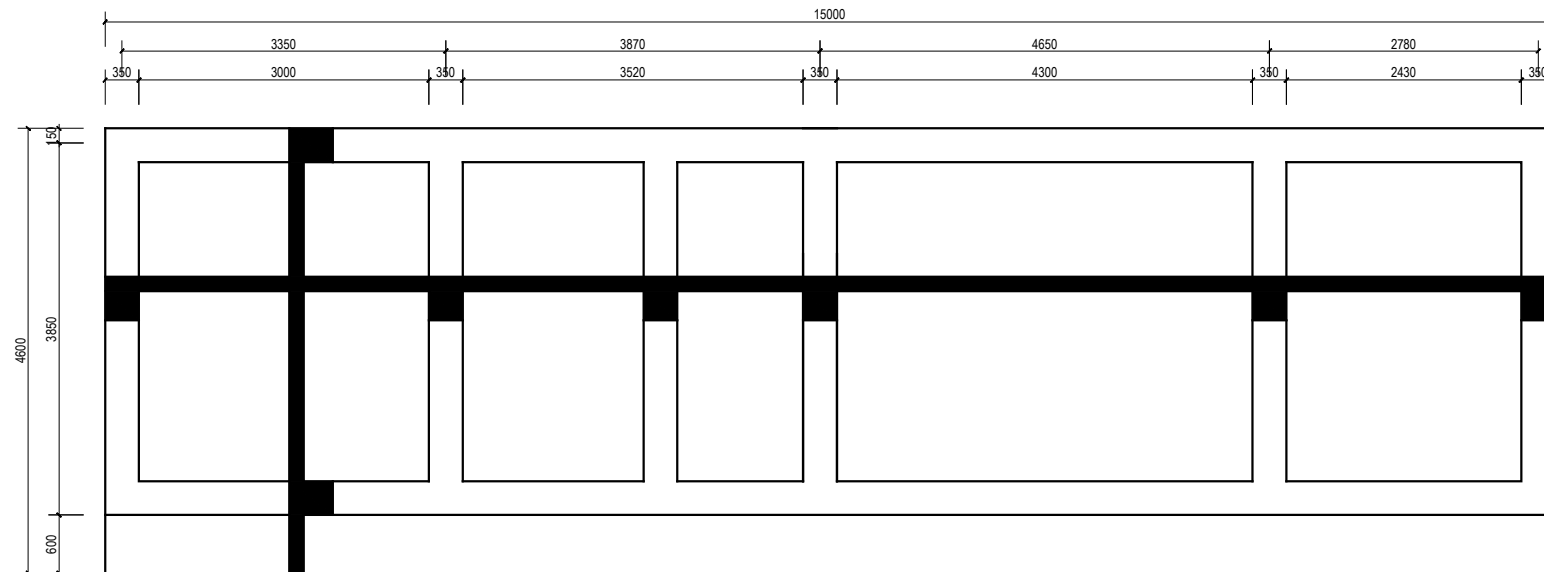
**ROOF PLAN**  
SCALE : 1:80

- NOTE
1. ALL DIMENSIONS ARE IN MM AND ANGLES IN DEGREES UNLESS OTHERWISE NOTED.
  2. ROOF SLOPE 3%



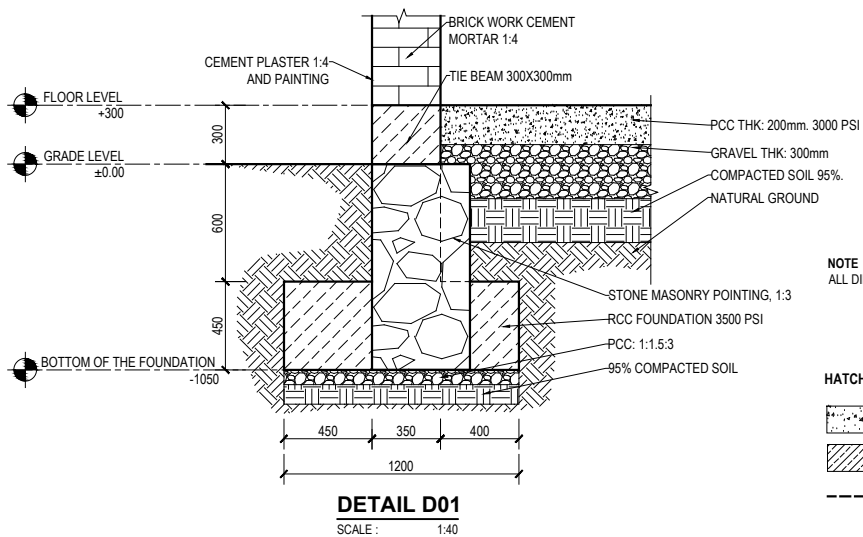
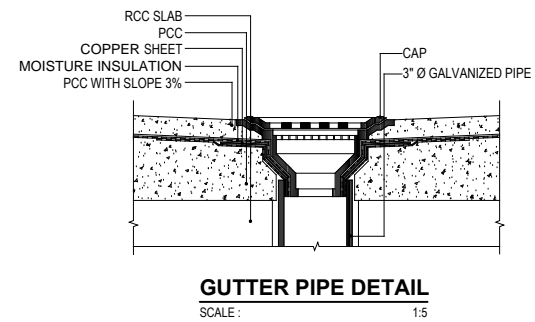
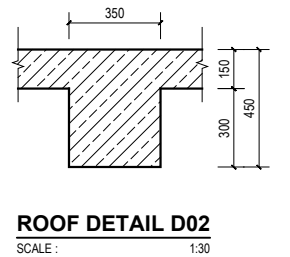
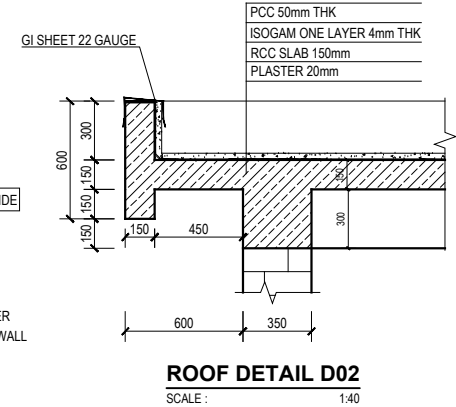
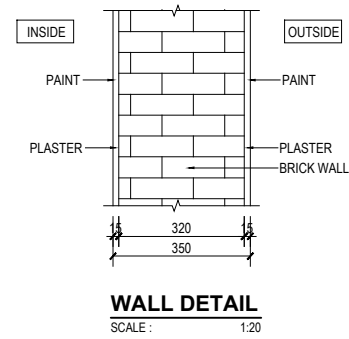
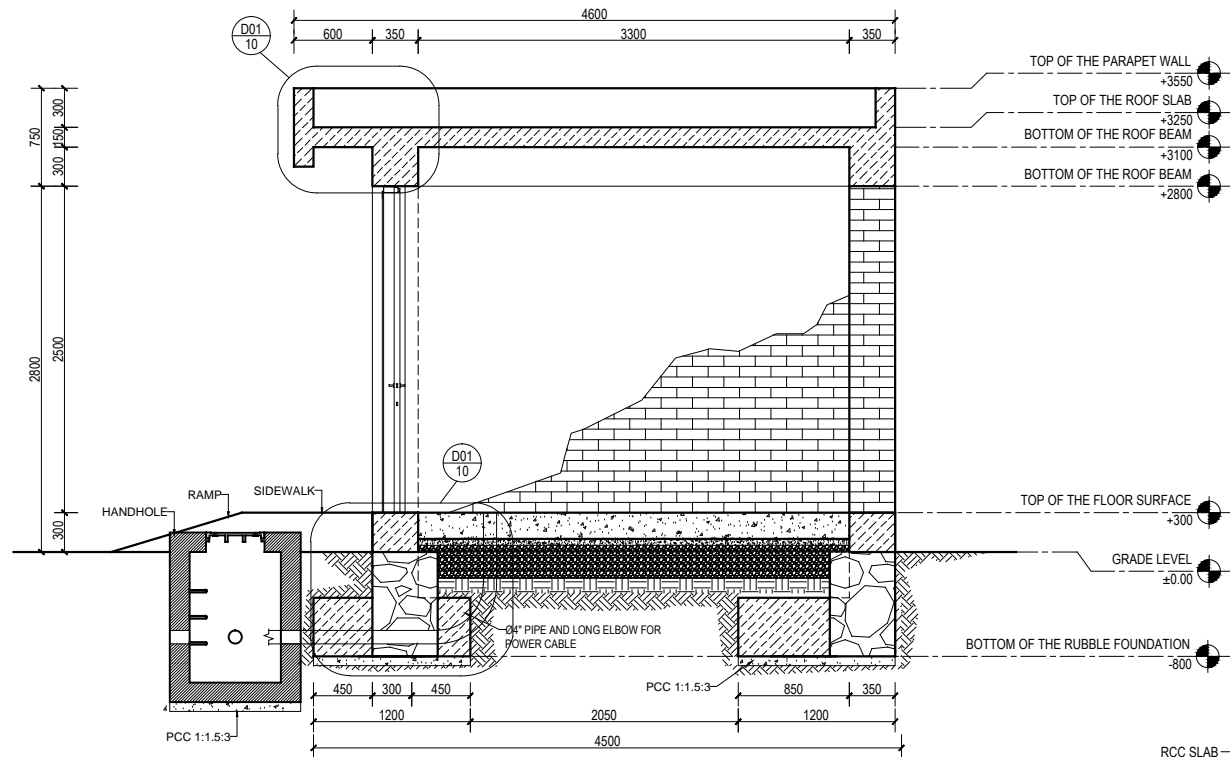
**FOUNDATION PLAN**

SCALE : 1:80



**SHUTTERING PLAN**

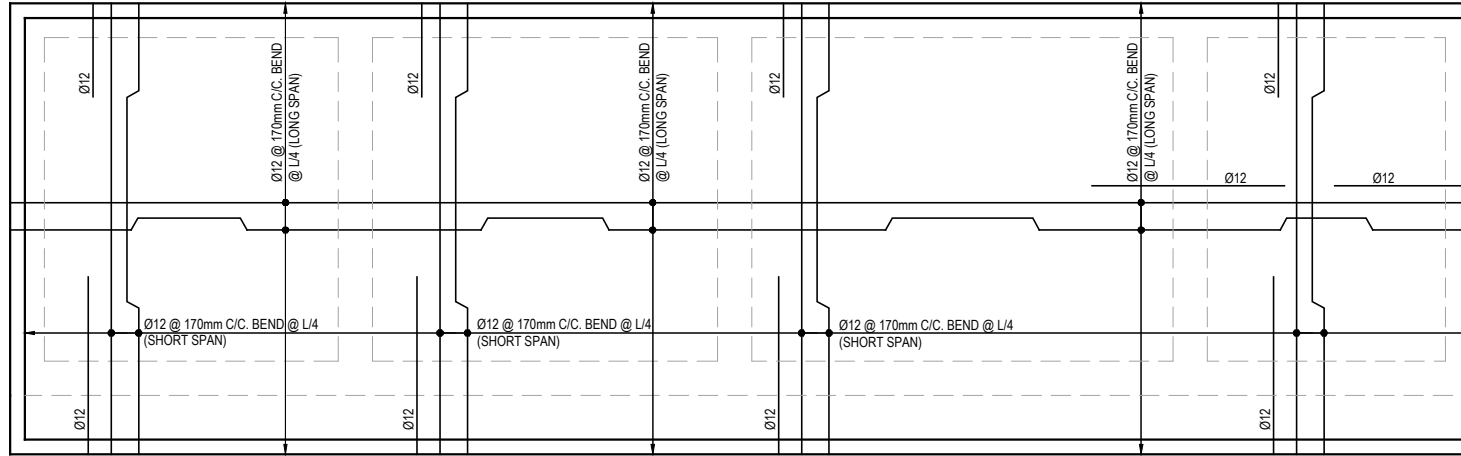
SCALE : 1:80



NOTE  
 ALL DIMENSIONS ARE IN MM AND ANGLES IN DEGREES UNLESS OTHERWISE NOTED.

#### HATCH LEGEND

	PLAIN CONCRETE CEMENT		BRICK, SECTION		REINFORCEMENT COLUMN
	REINFORCEMENT CONCRETE CEMENT		BRICK, PLAN		DOWN
	OVERHEAD STRUCTURE		ELEVATION		

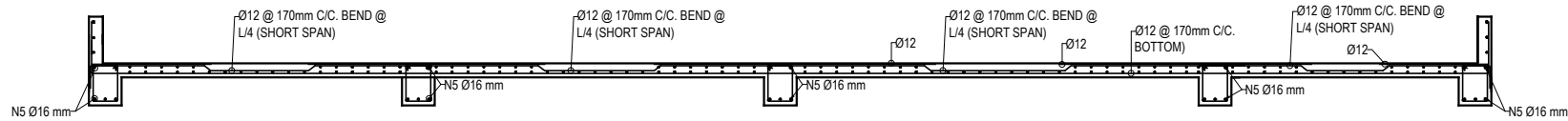


#### NOTE

1. CONCRETE MIX RATIO SHOULD BE SUCH THAT 28 DAYS STRENGTH MUST BE  $f_c' = 3000$  psi.
2. DEFORMED BAR OF GRADE 60 ( $f_y = 60000$  psi).
3. MINIMUM CLEAR COVER TO REINFORCING STEEL 30 mm.
4. VIBRATOR, MIXTURE MACHINE SHOULD BE USED IN CONCRETE CASTING.
5. CONSTRUCTION SHOULD BE DONE WITH CLOSED SUPERVISION OF AWCC SITE ENGINEER.

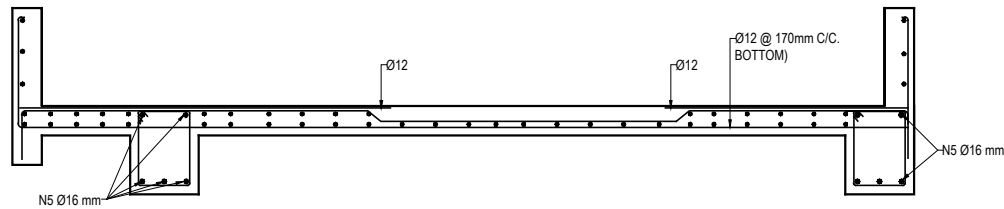
#### ROOF SLAB REINFORCEMENT PLAN

SCALE : 1:80



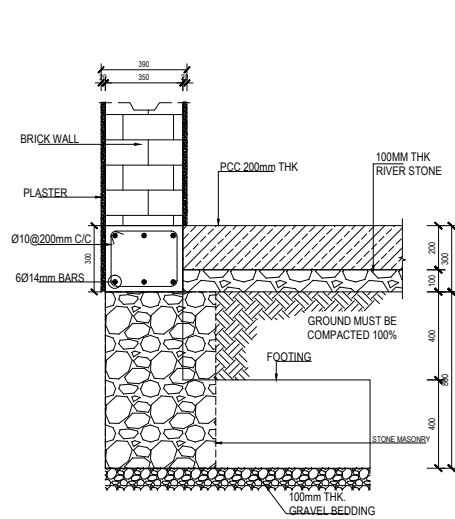
#### ROOF SLAB SECTION

SCALE : 1:80



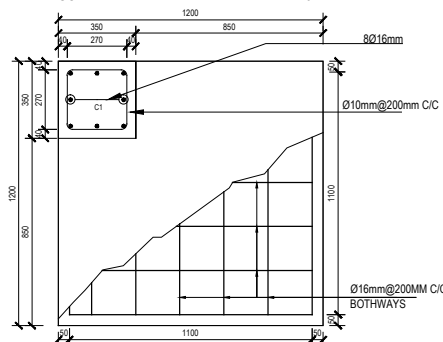
#### SECTION G-G

SCALE : 1:40



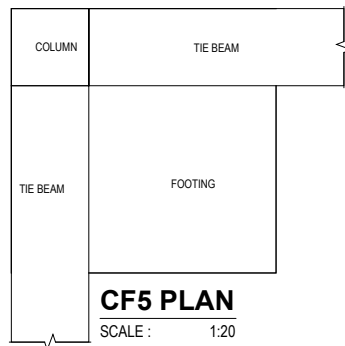
**COLUMN FOOTING**

SCALE : 1:20



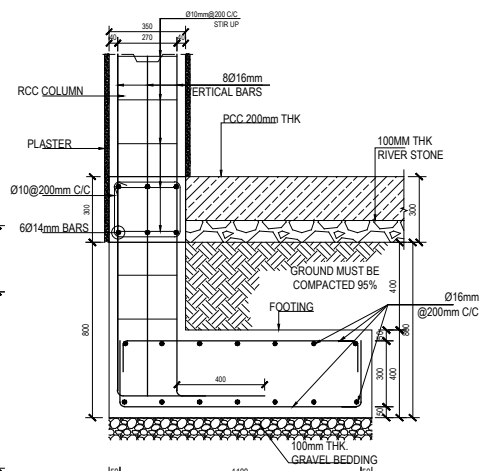
**CF5 PLAN**

SCALE : 1:20



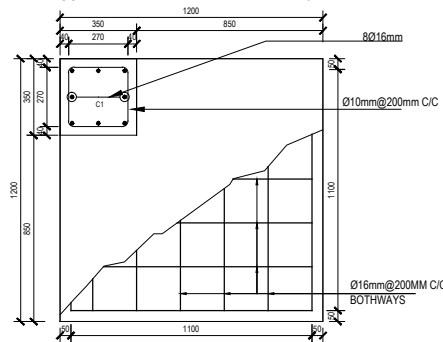
**CF5 PLAN**

SCALE : 1:20



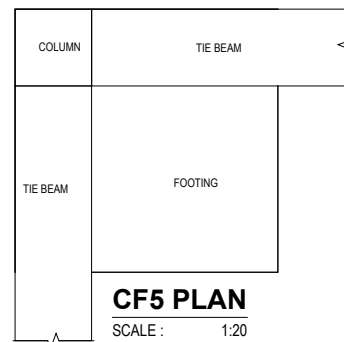
**COLUMN FOOTING**

SCALE : 1:20



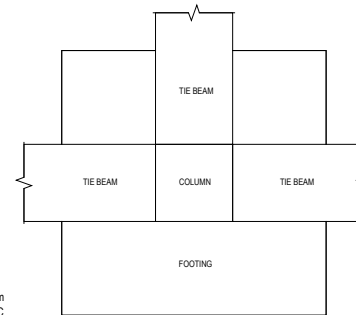
**CF5 PLAN**

SCALE : 1:20



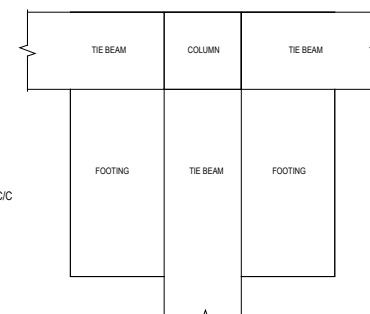
**CF5 PLAN**

SCALE : 1:20



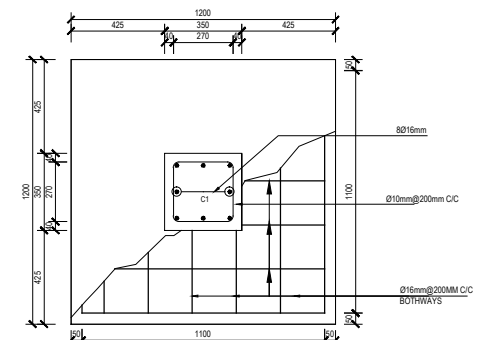
**CF3 PLAN**

SCALE : 1:20



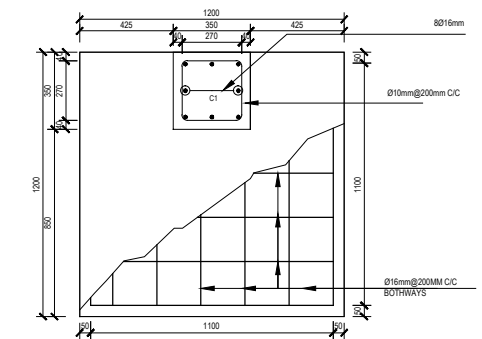
**CF4 PLAN**

SCALE : 1:20



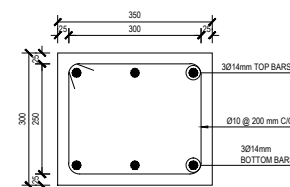
**CF3 PLAN**

SCALE : 1:20



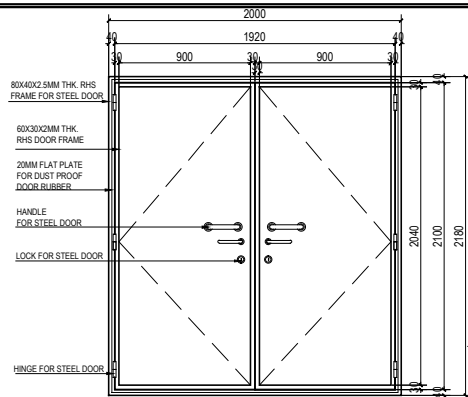
**CF4 PLAN**

SCALE : 1:20



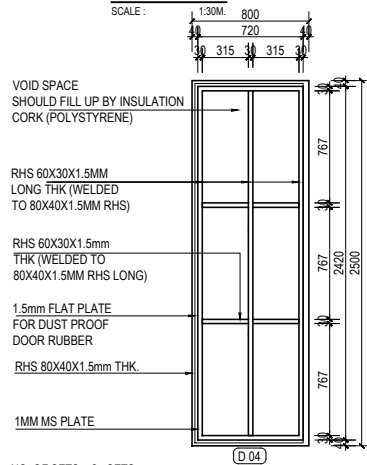
**TIE BEAM DETAIL**

SCALE : 1:10M.



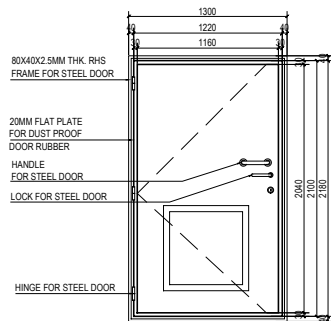
NO. OF SETS: 1-SET  
LOCATION: FOR FUEL TANK ROOM  
TYPE: STEEL DOOR  
(HINGE SIDE ELEVATION)

**FRONT VIEW**  
SCALE: 1:30M.



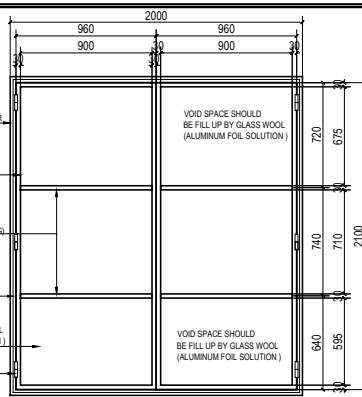
NO. OF SETS: 2-SETS  
LOCATION: GROUND FLOOR  
TYPE: STEEL DOOR  
(HINGE SIDE ELEVATION)

**STEEL DOOR**  
SCALE: 1:50

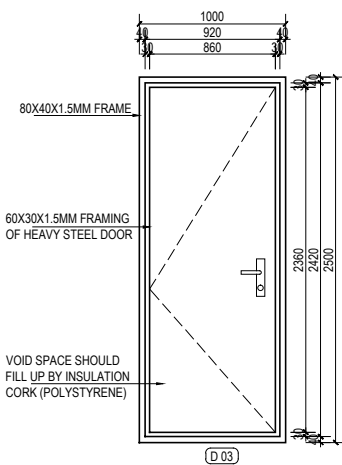


NO. OF SETS: 1-SET  
LOCATION: FOR DG CANOPY ROOM  
TYPE: STEEL DOOR  
(HINGE SIDE ELEVATION)

**FRONT VIEW**  
SCALE: 1:40M.

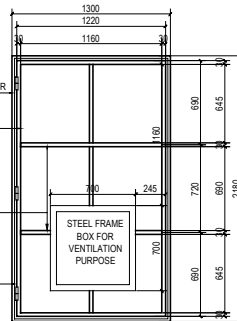


**FRAMING PLAN**  
SCALE: 1:30M.

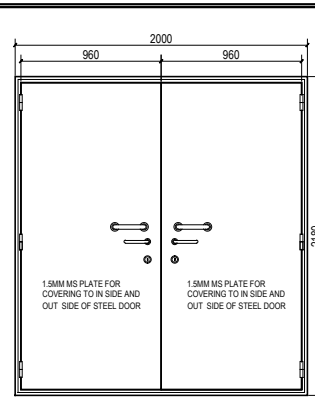


NO. OF SETS: 2-SETS  
LOCATION: GROUND FLOOR  
TYPE: STEEL DOOR  
(HINGE SIDE ELEVATION)

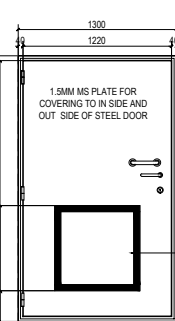
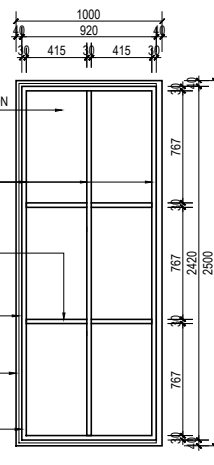
**RHS FRAMING LAYOUT PLAN**  
SCALE: 1:50



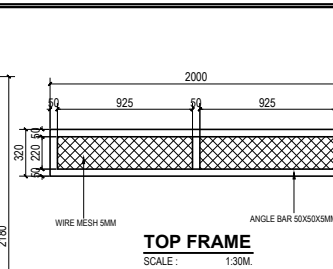
**FRAMING PLAN**  
SCALE: 1:40M.



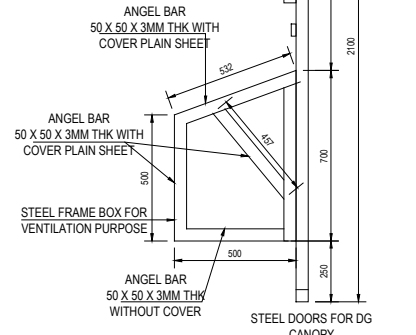
**MS PLATE 1.5MM**  
SCALE: 1:30



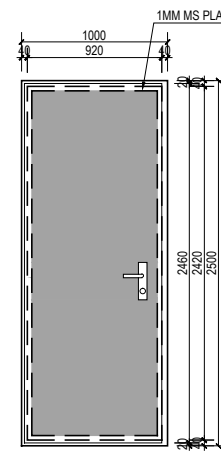
**MS PLATE 1.5MM**  
SCALE: 1:40



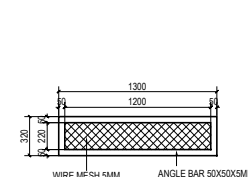
**TOP FRAME**  
SCALE: 1:30M.



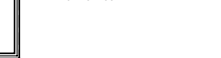
**STEEL DOOR DETAIL**  
SCALE: 1:20M.

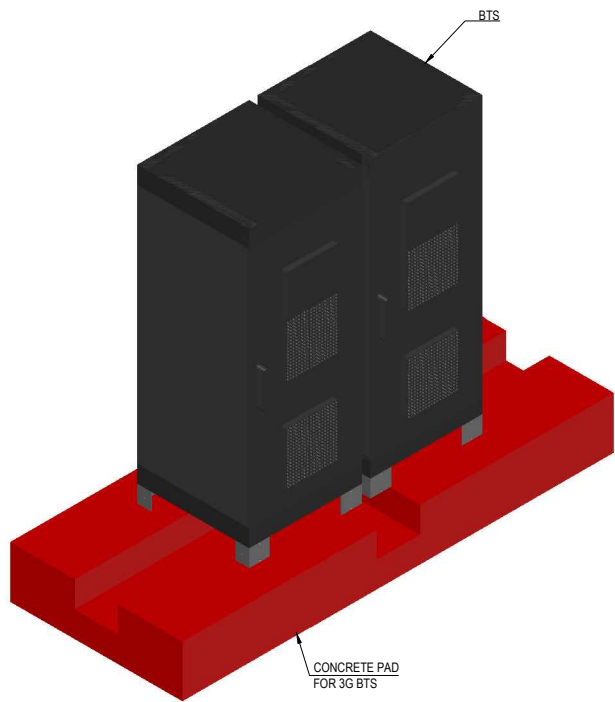


**RHS FRAMING LAYOUT PLAN**  
SCALE: 1:50

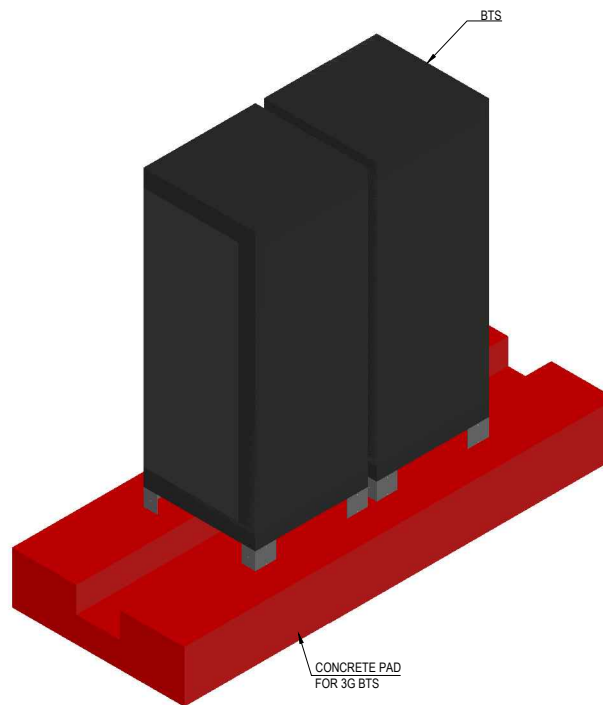


**TOP FRAME**  
SCALE: 1:30M.

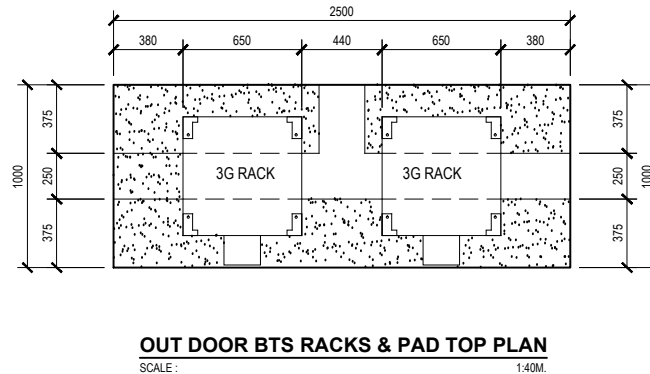
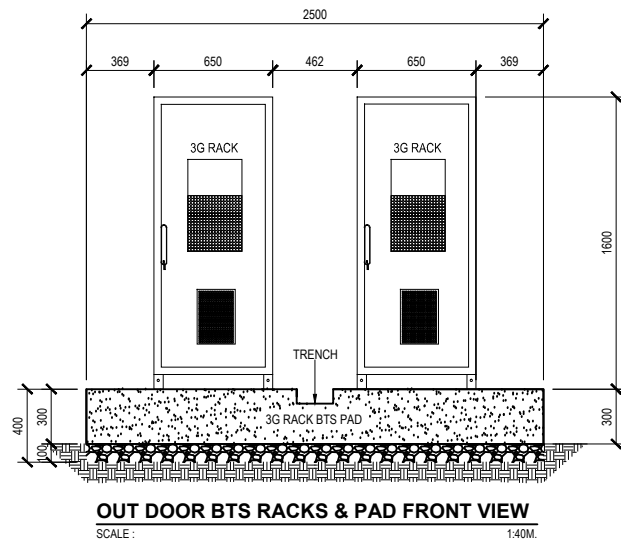
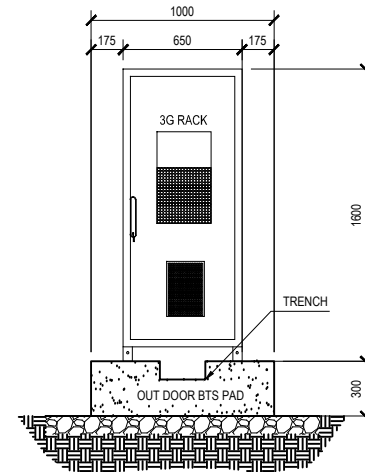
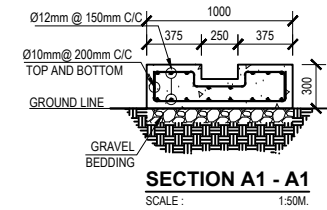
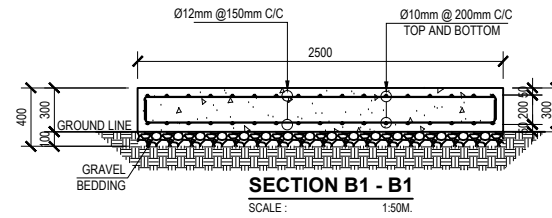
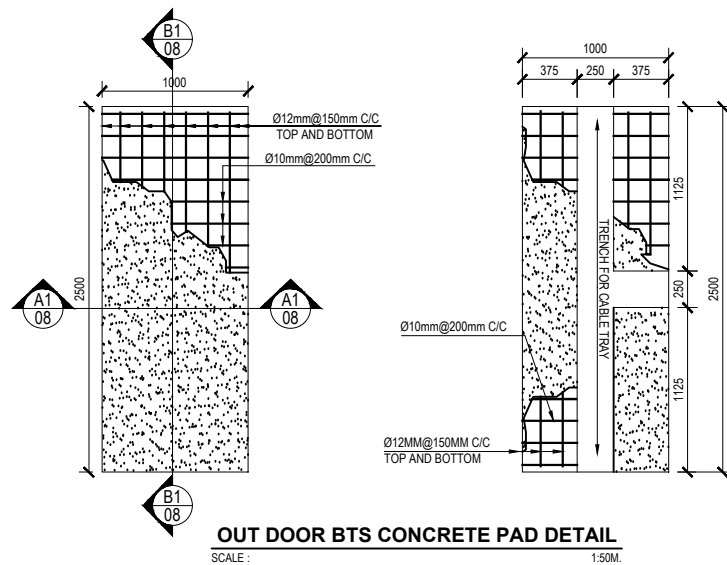




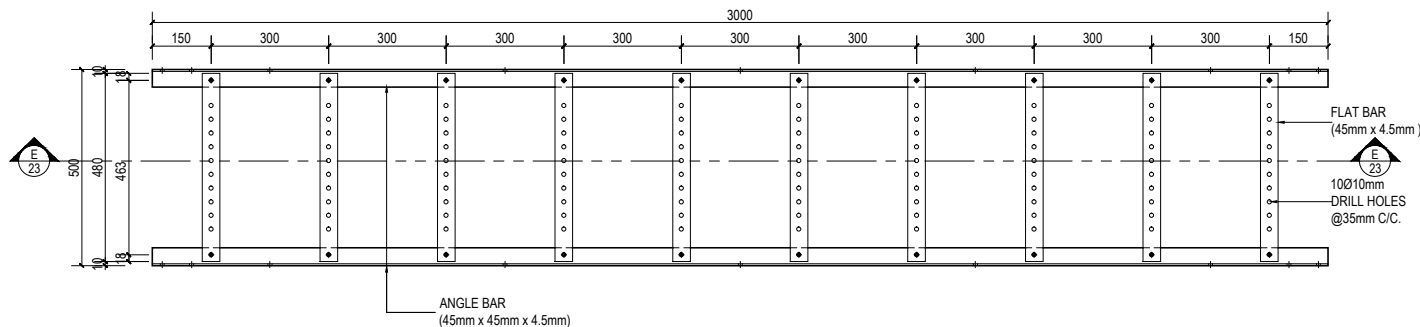
**3D VIEW PLAN**  
SCALE : 1:NTS



**3D VIEW PLAN**  
SCALE : 1:NTS

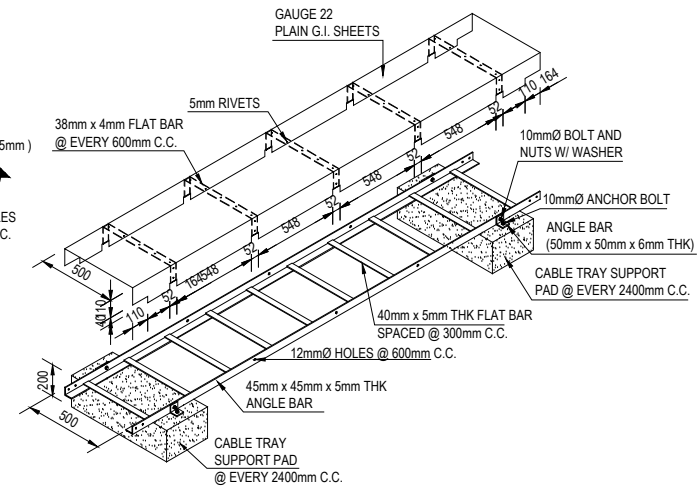






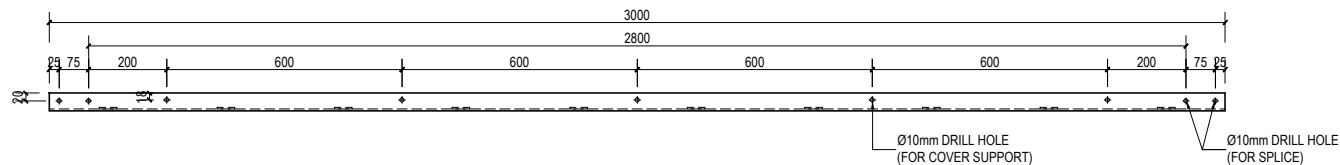
### CABLE TRAY FOR BTS

SCALE : 1:20M.



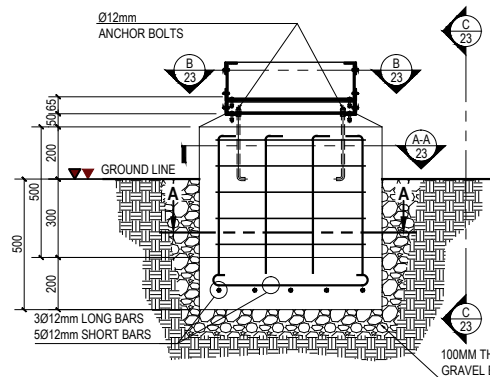
### HORIZONTAL CABLE TRAY ISOMETRIC VIEW

SCALE : 1:50M.



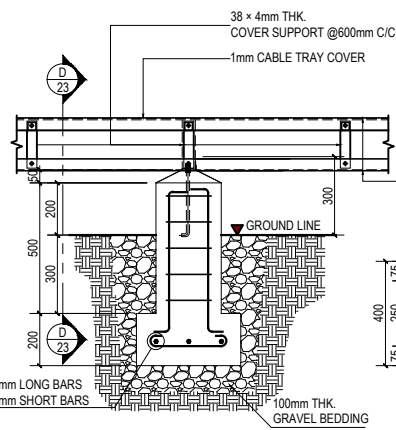
### SECTION E-E

SCALE : 1:20M.



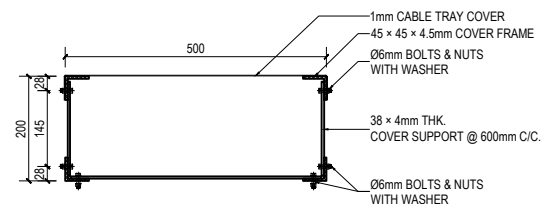
### SECTION D-D

SCALE : 1:30M.



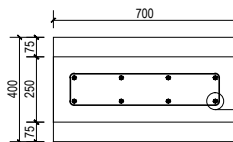
### SECTION C-C

SCALE : 1:30M.



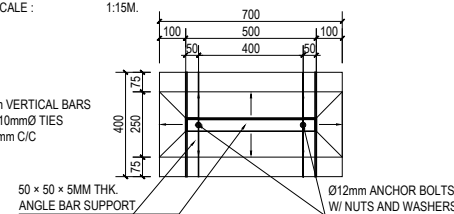
### SECTION D-D

SCALE : 1:15M.



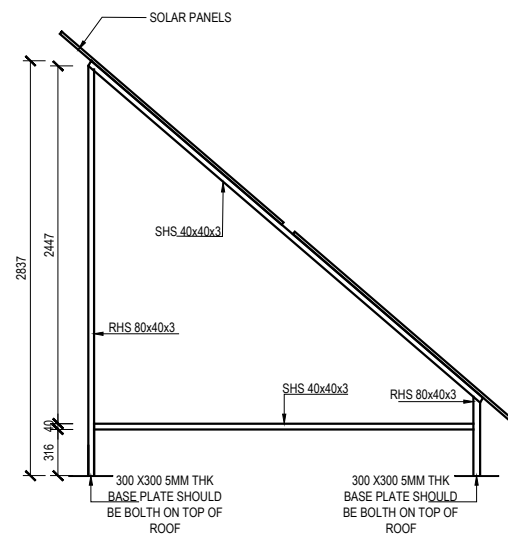
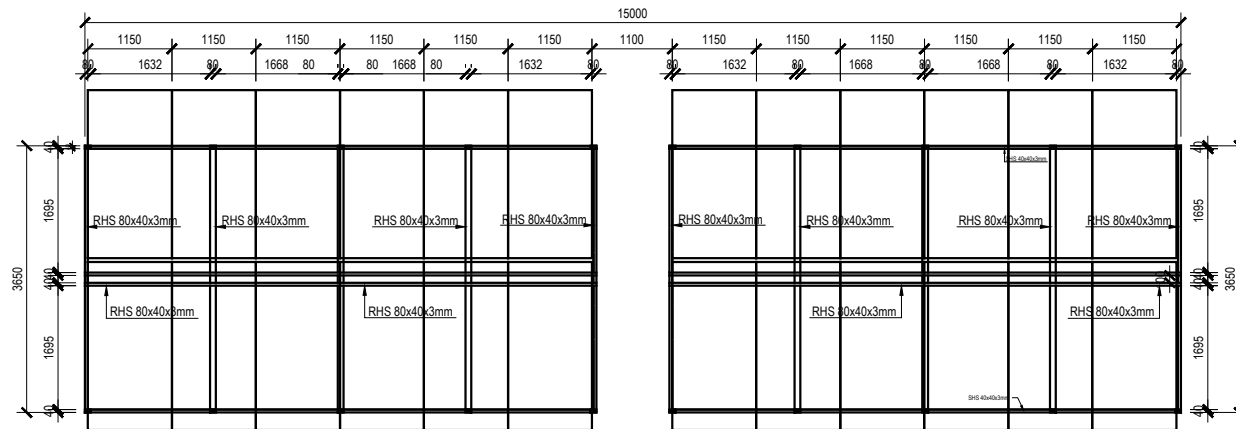
### SECTION A-A

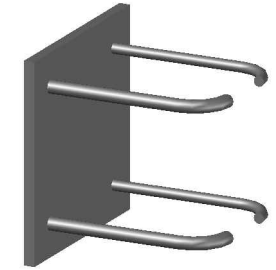
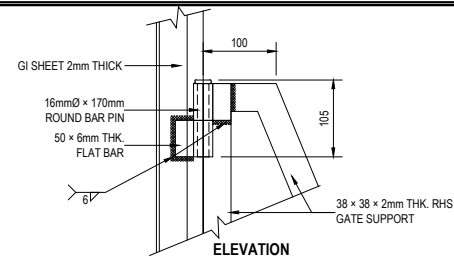
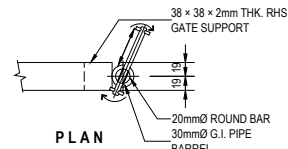
SCALE : 1:30M.



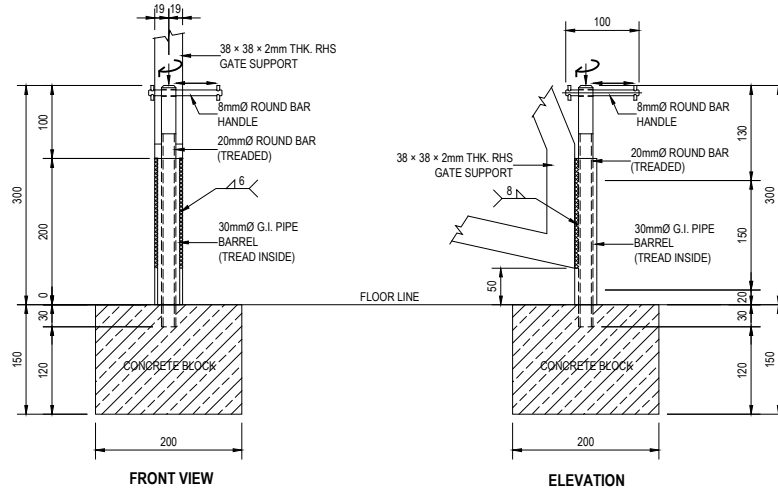
### SECTION B-B

SCALE : 1:30M.

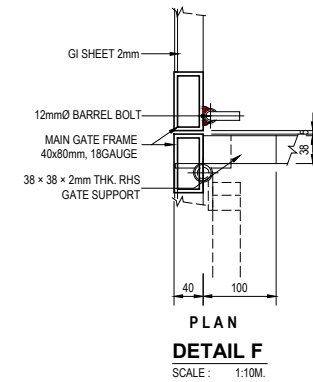




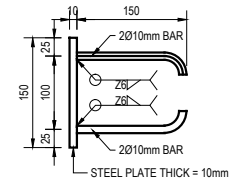
STEEL PLATE WITH BRACKETS  
SCALE: N/A



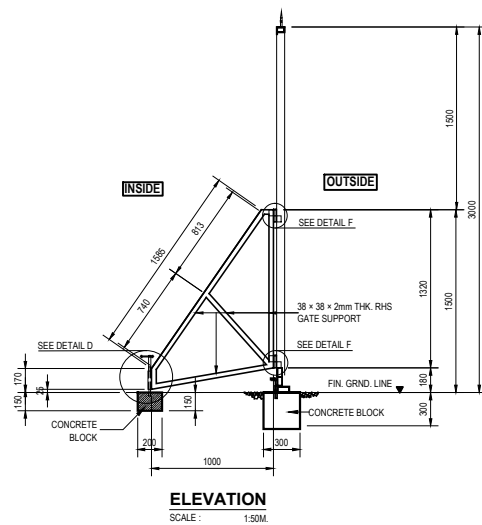
**DETAIL D**  
SCALE: 1:10M.



SCALE: 1:10M.



TOTAL 4Ø10mm BARS AT CORNERS  
**STEEL PLATE WITH BRACKETS**  
SCALE: 1:10M.



SCALE: 1:50M.



**SMALL DOOR HANDLE AND LOCK PHOTOS**  
SCALE: N/A

